

# ONLY IN US! HER INAUGURAL MAKEUP

**W**ondering what makeup Michelle will wear on inauguration day? Just stop by Beauty 360 in Washington, D.C., January 16, where Ingrid Grimes-Myles, her makeup artist of six years, will debut the looks on a model. Grimes-Myles gave *Us* her inspiration sketches: chic neutrals for day; major glam, with deep, smoky plum-lined lids, for the evening galas.



**Beauty 360 in Washington, D.C.'s Dupont Circle.**



## DAY

**"I contour with a powder that is a shade and a half darker than her skin tone to build definition," she says.**

◀ **Eyes** "I'll do two earth shades on the lid and crease." (Model Co. Colourbox eye shadow in Seychelles, \$20; Stendahl mascara in Noir Black, \$20)

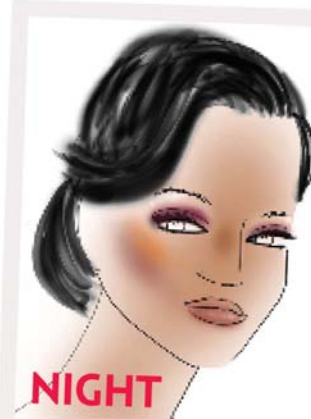
◀ **Cheeks** POP Beauty Blush Cake in Natural in Nudes, \$18

◀ **Lips** "Layering the lip pencils will make the lipstick last for hours." (It Cosmetics Pencils Dual Ended for Lip in Attract and Energy, \$18)

▶ **Eyes** "For evening, I'll add drama with a deeper pigment," Grimes-Myles says. (Mineral Essence eye shadow in Merlot, \$15; Bloom liquid eyeliner in Jet Black, \$16)

▶ **Cheeks** Laura Geller Blush-n-Brighten in Berry, \$30

▶ **Lips** "I'll use a neutral tone on the lip, but add gloss for shine." (Paula Dorf Color Sheer lipstick in Innocence, \$20)



## NIGHT

**"I'll pump up the cheek to complement whatever color dress she'll be wearing," Grimes-Myles tells *Us*.**

THIS PAGE, CLOCKWISE FROM TOP LEFT: NEWS.COM; N.Y.C. STUART MCKENZIE/EYECANDY.CO.UK